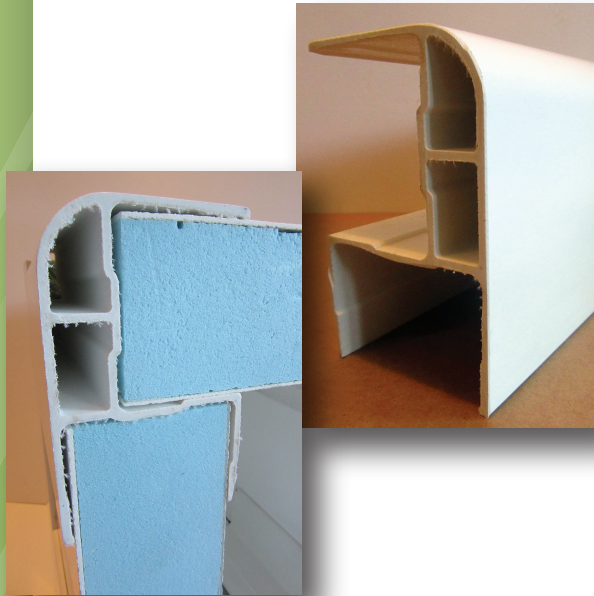


PRODUCTS

- 01 Sandwich paneling:
- FRP-XPS-FRP
- FRP-PU-FRP
- 02 Honeycomb:
- FRP-PP-FRP
- FRP-AL-FRP
- 03 Extrusions:
- FRP
- Aluminum
- 04 Dry Cargo Truck Bodies:
- Full Build
- Flat Pack Complete Kits
- 05 Freezer Truck Bodies:
- Full Build
- Flat Pack Complete Kits

FRP= *Fiber Reinforced Plastic*
EPS= *Extruded Polystyrene Foam*
PU= *Polyurethane*
PP= *Polypropylene*
AL= *Aluminum*

Extrusion:



CONTACT US

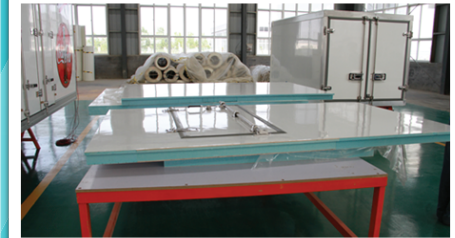
🏠 859 Craigflower Rd
Victoria, BC, V9A 2X2

☎ 250-889-3740

✉ www.totalcomposites.com
info@totalcomposites.com

TOTAL COMPOSITES

We sell innovative, modern
Fiberglass Composite panels
that are extremely durable.



QUALITY

"Raw materials sourced from Germany, and assembled in China in our state of the art assembly plant. We guarantee the highest product standards with our stringent quality checks."

✓ Freezer Truck Body Kits

Include:

- Panels and Extrusions cut to size
- Adhesives
- Electrical wiring
- Interior lights
- Outside corner lights

Benefits to the You

- Superior insulation value
- Fulfill the most modern requirements
- No cold bridging
- Lightweight and will never corrode
- Quick and easy to repair
- Save you money
- UV resistant
- Pre-finished & do not need to be painted

At Total Composites we offer standard sized Truck Bodies or we can build to your specifications.

Options:

- Insulated Rollgate
- Side entry door
- Dividers
- Tie down points
- Curtains
- Subframe



Panel Specs for Freezer Bodies:

Total Composite panels are self supporting. Made of a Fiber Reinforced Plastic (FRP)-sheet + Expanded Polystyrene Foam (XPS) + FRP sheet, our high density XPS core fulfills the highest demands for thermal insulation, moisture proofing and fire proof features.

✓ Dry Cargo Body Kits

Dry Cargo Truck body kits are easy to assemble and include all components such as:

- Panels and Extrusions cut to size
- Adhesives
- Electrical wiring
- Interior lights
- Outside corner lights



Benefits to the You

- Lightweight
- Quick and easy to repair
- Fulfill the most modern requirements
- Cost savings
- Have a smooth exterior surface for branding and graphic application
- UV resistant and do not need to be painted

We offer standard sized Truck Bodies or we can build to your specifications.



Panel Specs for Dry Cargo Bodies:

Total Composite panels are self supporting. Made of a smooth surface Fiber Reinforced Plastic (FRP)-sheet + Polypropylene (PP) + FRP sheet.